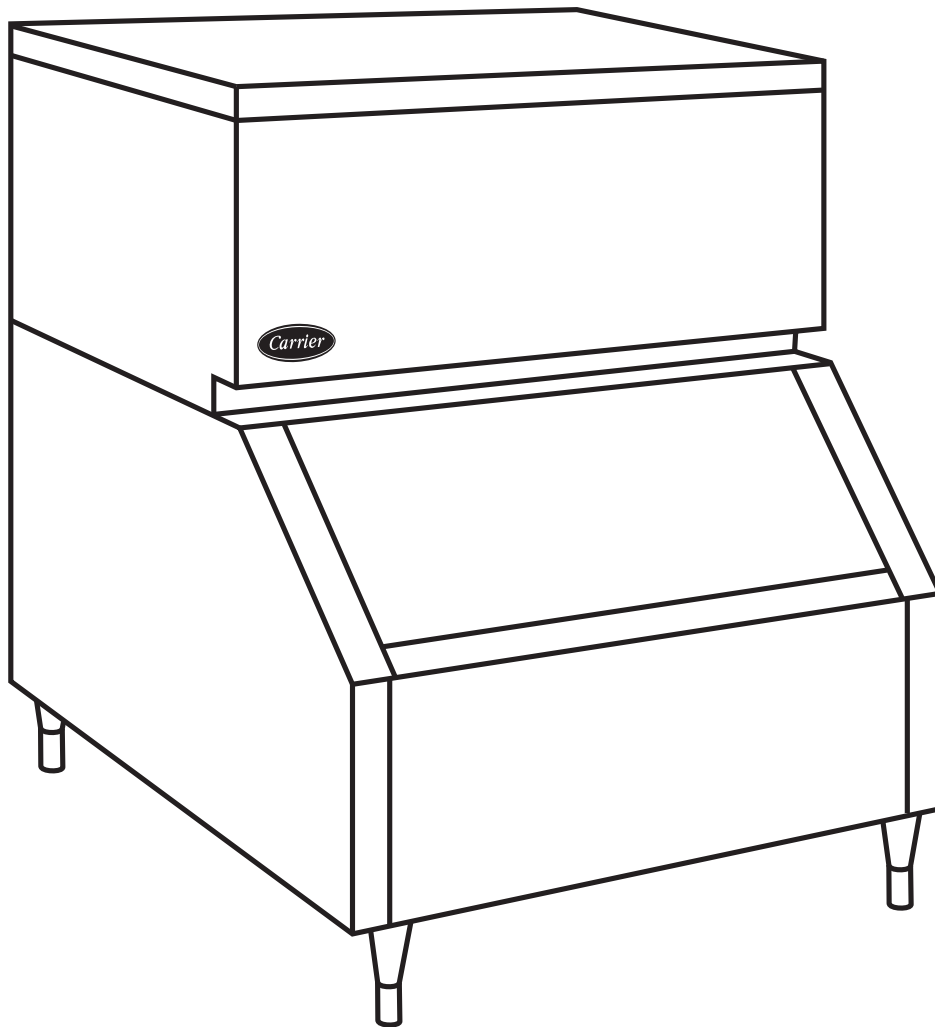




REFRIGERATION PARTNER



# Multiplexing Installation Instructions for Carrier 26CT350 Series Ice Machines

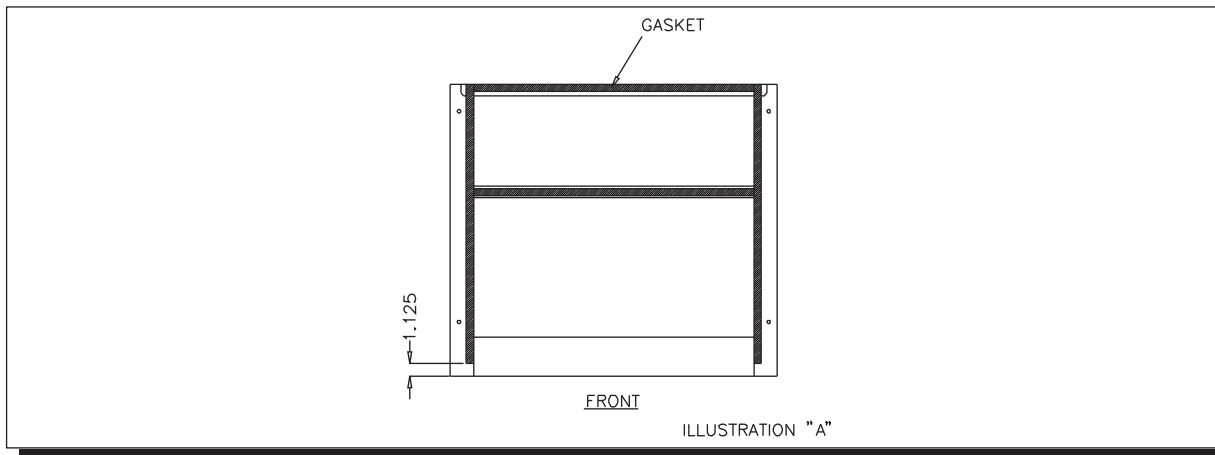


## 26CT350 MULTIPLEXING INSTALLATION INSTRUCTIONS

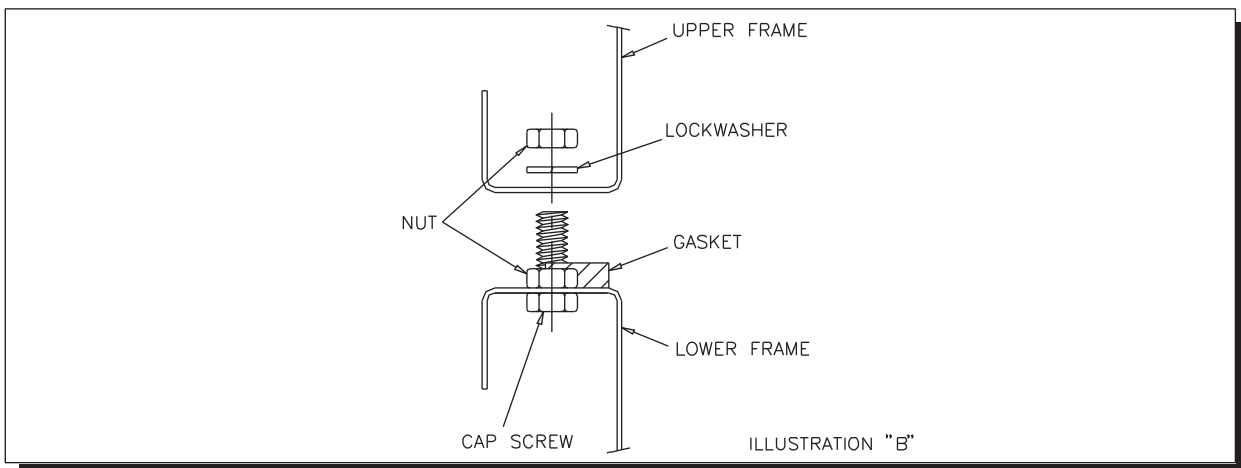
### **CAUTION:**

- ◆ RISK OF PERSONAL INJURY, PROPERTY DAMAGE, EQUIPMENT FAILURE OR FIRE.
- ◆ Refer all maintenance to qualified personnel.
- ◆ Never operate this equipment with covers, panels or other parts removed or not properly secured.
- ◆ Use a suitable lifting means and be careful of sharp edges.

1. Remove cabinet panels from upper and lower ice makers
2. Apply gasket supplied with stacking kit to lower ice maker frame and cut to fit. (See Illustration "A")

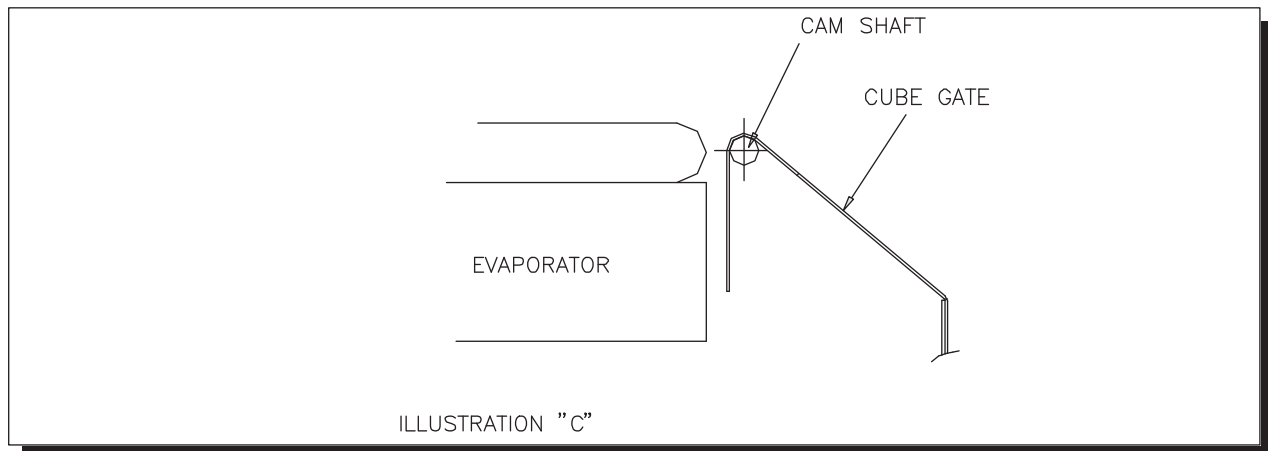


3. Install 4 - 1/4-20 cap screws up through mounting holes of lower ice maker and fasten with 4 nuts. (See Illustration "B")



## 26CT350 MULTIPLEXING INSTALLATION INSTRUCTIONS

4. Position upper ice maker over lower unit and lower in place. Install lock washers and secure with 4 nuts. (See Illustration "B") **CAUTION:** Support upper unit until all fasteners are secured.
5. Hang Cube Gate on lower ice maker cam shaft. (See Illustration "C")



6. Remove the standard Drain Pan/Chute from the upper ice maker and replace with the Multiplex model. (Supplied with kit) Connect the drain hose to the drain pan nipple, and route it down so that it spills on the lower ice maker drain pan. Secure the hose with a clamp.
7. Route the upper ice maker bin thermostat capillary tube through the grommetted hole in the right side wall, down to the lower ice maker chute opening for positioning. Keep capillary tube toward front of side wall, out of the path of falling ice. Stacking a third ice maker will require a bin thermostat with a longer capillary tube. Consult factory for more information.